



Jeep

Turin, 23<sup>rd</sup> March 2011

**CAMPAIGN 5533 - Recall Campaign**

**Models: Fiat Grande Punto, Punto Evo, Punto (188), Bravo, Idea, Panda with 1.2 and 1.4 engines, having double petrol and LPG fuel supply.**

**- Pressure regulator for LPG fuel supply**



On Fiat Grande Punto, Punto Evo, Punto (188), Bravo, Idea, Panda cars with 1.2 and 1.4 engines having double petrol and LPG fuel supply, whose chassis numbers are listed in the following table,

	from chassis	to chassis
G. PUNTO (Line 1)	0483809	0594607
G. PUNTO (Line 2)	1423170	1583929
PUNTO EVO (Line 1)	0593512	0718469
PUNTO EVO (Line 2)	1583492	1667469
PUNTO (model 188)	1103487	1180725
BRAVO	4188172	4303989
IDEA	0191361	0201521
PANDA	1312322	1601485

due a possible non-compliance of the pressure regulator, supplied externally, a gas leak from the same regulator may occur.

Therefore, it is compulsory to make a pre-delivery intervention on vehicles still in stock. For vehicles which have already been delivered, customers must be contacted by registered letter (Annex 1), and the cycle described in Attachment (Annex 2) is implemented to upgrade all vehicles.

Annexes

Turin, 03/2011

**DRAFT OF R.R. LETTER**

**RECALL CAMPAIGN 5533**

**Models: Fiat Grande Punto / Punto Evo / Punto (188) / Bravo / Idea / Panda with 1.2 / 1.4 engines, having double petrol and LPG fuel supply**  
**- Pressure regulator for LPG fuel supply**

Dear Customer,

We inform you that, on a limited number of Fiat Grande Punto / Punto Evo / Punto (188) / Bravo / Idea / Panda cars with 1.2 / 1.4 engines, having double petrol and LPG fuel supply, due a possible non-compliance of the pressure regulator, a gas leak from the same regulator may occur.

As this fault could affect safety, we would be grateful if you could have your vehicle checked by taking it back to the Dealership you bought it from or, if more convenient, to any other Fiat dealership, referencing to this letter.

The check and the possible intervention to prevent the occurrence of the fault should be made as soon as possible, free of charge for you.

For your convenience, you can book this intervention by phone, by directly contacting the Fiat Dealership you deem most convenient for you.

For any clarification or assistance, contact our toll-free number .....

If you have already sold or transferred your vehicle to someone else, we would be very grateful if you could provide us with the name and address of the new owner, using the enclosed stamped and pre-printed card, along with any information which could make our research of the possible owner or user easier.

We thank you for your kind cooperation and apologise for any inconvenience caused. In the meanwhile, we send you our most sincere regards.

Car: Fiat Grande Punto / Punto Evo / Punto (188) / Bravo / Idea / Panda

Chassis .....

<b>CAMPAIGN</b>	<b>Recall Campaign</b>	
	<b>5533</b>	

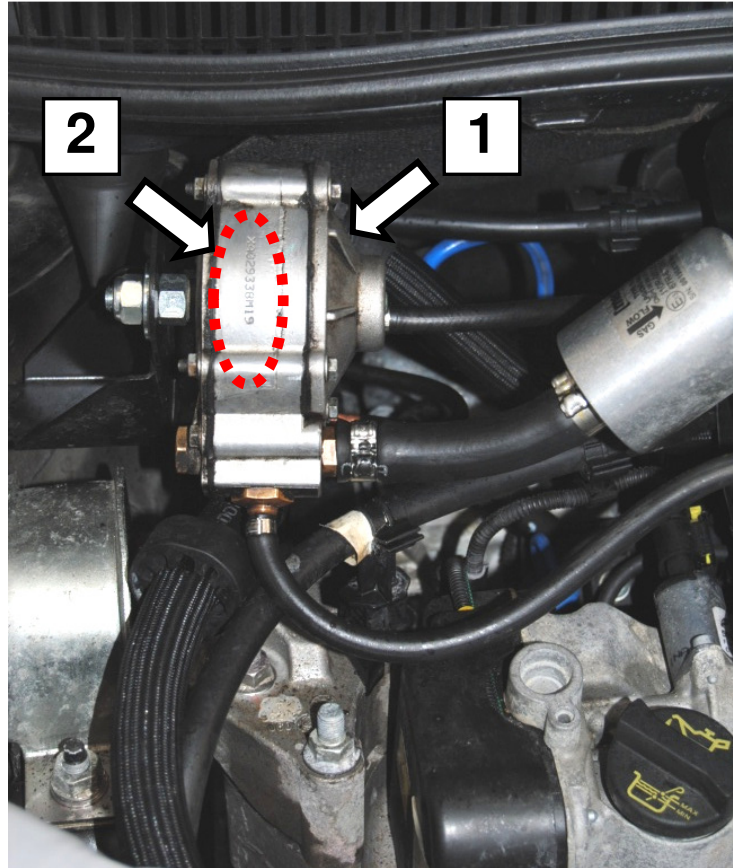
<b>COMPONENT:</b>	Pressure regulator for LPG fuel supply		
<b>PROBLEM:</b>	Non-compliance		
<b>VERSION:</b>	Fiat Grande Punto 1.4 8v		
<b>CONCERNED VEHICLES:</b>	all vehicles with chassis number listed in SIGI. (chassis numbers ranging between 483809 and 594607 and between 1423170 and 1583929)		
	vehicles assigned to you: consult your PC for the chassis numbers involved in the campaign.		
<b>TECHNICAL CAUSE:</b>	Production process		
<b>RELEASE NO.:</b>	0		
<b>MATERIAL:</b>	Description:	Part No.:	Q.ty:
	Pressure regulator	71753461	01
<b>SPECIAL TOOLS:</b>	-		
<b>EPLUS ORDER UPLOADING METHOD:</b>	-		
<b>REMUNERATION:</b>	Cost:	Campaign:	Operation: Time:
<b>MANPOWER AND MATERIAL:</b>	A01	5533	A Check 0.20 B Check+interv. 1.20
<b>MISCELLANEOUS (MAIL, ETC.):</b>	A10	5533	- -
<b>SOLUTION IN PRODUCTION:</b>	The fitting of complying parts is guaranteed.		
<b>NETWORK INTERVENTION IDENTIFICATION:</b>	A spot of white paint on the pressure regulator next to the printed code		

Therefore, it is compulsory to make a pre-delivery intervention on vehicles still in stock. For vehicles which have already been delivered, customers must be contacted by registered letter to upgrade all vehicles.

## OPERATING CYCLE

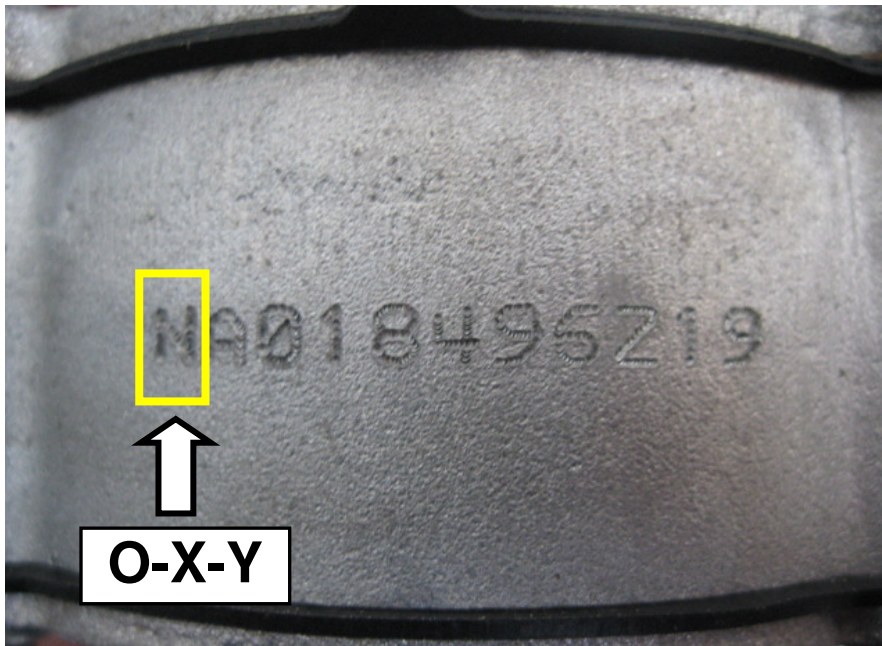
Working in the engine compartment, proceed as follows:

- Locate the pressure regulator (1) for LPG fuel supply
- Identify the printed code (2) on the pressure regulator

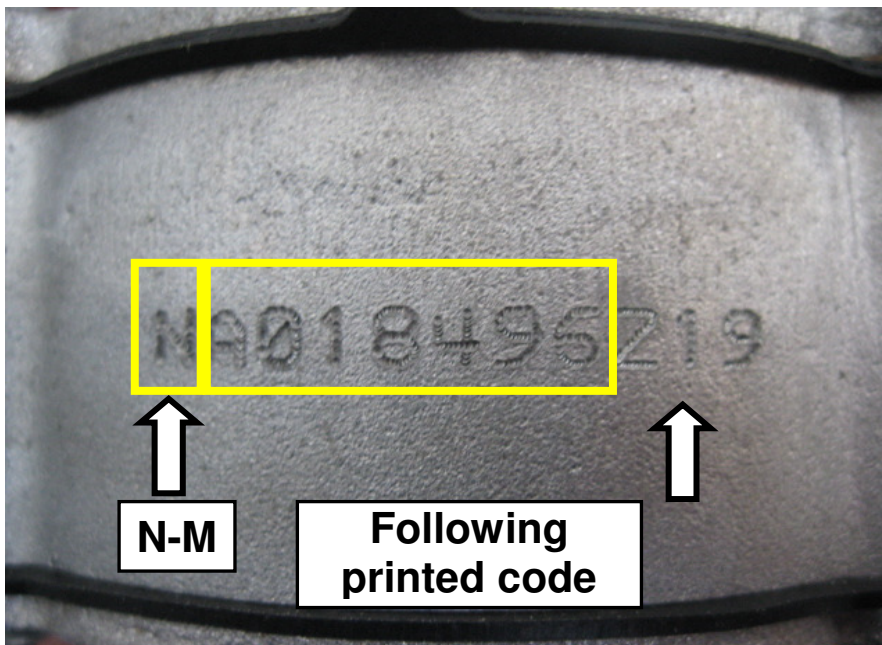


Check the code printed on the pressure regulator:

- If the first letter printed on the pressure regulator is:  
**O** or **X** or **Y** the vehicle **is compliant**.



- If the first letter printed on the pressure regulator is:  
**N** or **M** you need to check the code printed after N M:



- If the code printed after the letter **N** is higher or equal to **A023643** the vehicle **is compliant**.
- If the code printed after the letter **M** is higher or equal to **A025351** the vehicle **is compliant**.

If, after the checks, the printed code is different from the above, the vehicle **is not compliant** and the pressure regulator must be replaced operating as described in operation 1043B40 - 1043A02 of the Service Manual.

**Note:**

**The replaced material must be compulsorily returned for being analysed.  
Incorrect replacement or failed return of materials will be charged to the dealer.**

**Disposal of removed parts:**

**Removed part return required?: YES**

**ITALY:**

ON REQUEST OF THE D.R.S. THE REMOVED PARTS  
MUST BE RETURNED TO THE FOLLOWING ADDRESS:

FIAT GROUP AUTOMOBILES S.p.A.  
- SERVIZIO RESI DA RETE  
- CORSO UNIONE SOVIETICA 460 - RICEVIMENTO  
MERCI MIRAFIORI – PORTA 14 - C.A.P. 10135 –  
TORINO

*(If the parts are not returned, they shall be charged)*

**ABROAD:**

Local FGA technical service shall give all directions for  
the return of removed parts.

# CAMPAIGN

## Recall Campaign

5533



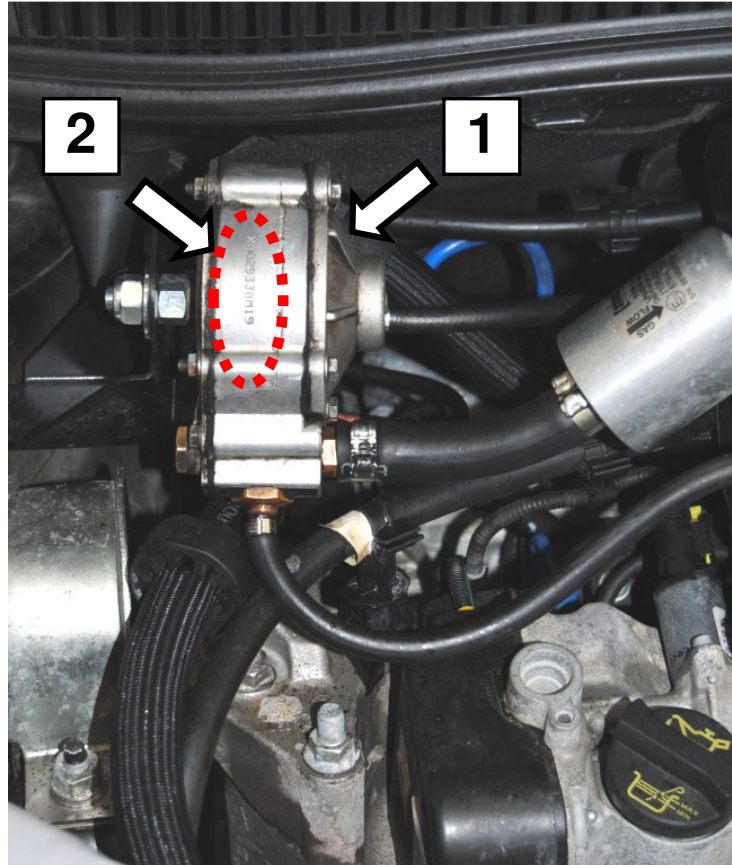
<b>COMPONENT:</b>	Pressure regulator for LPG fuel supply			
<b>PROBLEM:</b>	Non-compliance			
<b>VERSION:</b>	Fiat Punto Evo 1.4 8v			
<b>CONCERNED VEHICLES:</b>	all vehicles with chassis number listed in SIGI. (chassis numbers ranging between 593512 and 718469 and between 1583492 and 1667469)			
	vehicles assigned to you: consult your PC for the chassis numbers involved in the campaign.			
<b>TECHNICAL CAUSE:</b>	Production process			
<b>RELEASE NO.:</b>	0			
<b>MATERIAL:</b>	Description:	Part No.:	Q.ty:	
	Pressure regulator	71753461	01	
<b>SPECIAL TOOLS:</b>	-			
<b>EPLUS ORDER UPLOADING METHOD:</b>	-			
<b>REMUNERATION:</b>	Cost:	Campaign:	Operation:	Time:
<b>MANPOWER AND MATERIAL:</b>	A01	5533	A B	Check 0.20 Check+interv. 1.20
<b>MISCELLANEOUS (MAIL, ETC.):</b>	A10	5534	-	-
<b>SOLUTION IN PRODUCTION:</b>	The fitting of complying parts is guaranteed.			
<b>NETWORK INTERVENTION IDENTIFICATION:</b>	A spot of white paint on the pressure regulator next to the printed code			

Therefore, it is compulsory to make a pre-delivery intervention on vehicles still in stock. For vehicles which have already been delivered, customers must be contacted by registered letter to upgrade all vehicles.

## OPERATING CYCLE

Working in the engine compartment, proceed as follows:

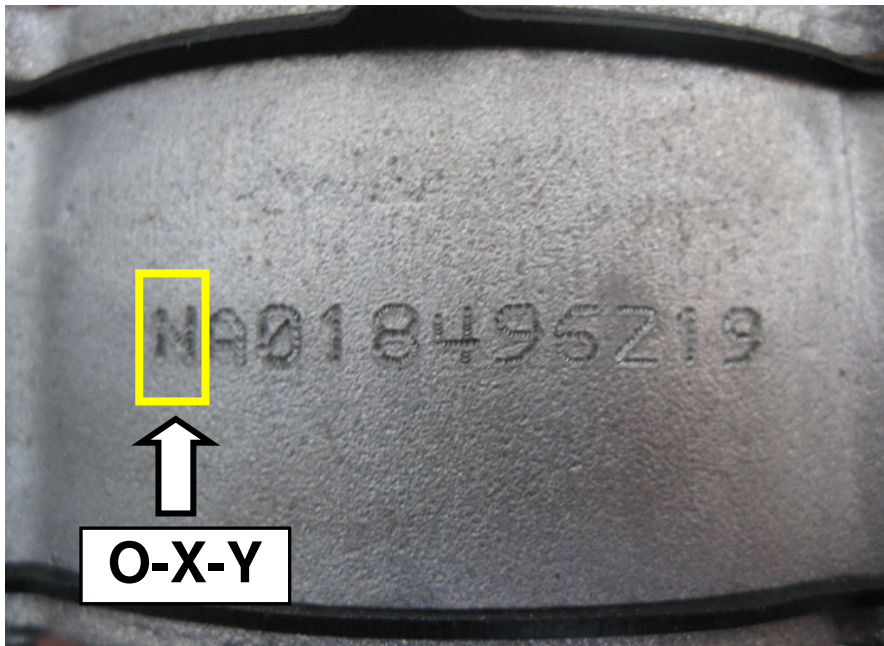
- Locate the pressure regulator (1) for LPG fuel supply
- Identify the printed code (2) on the pressure regulator



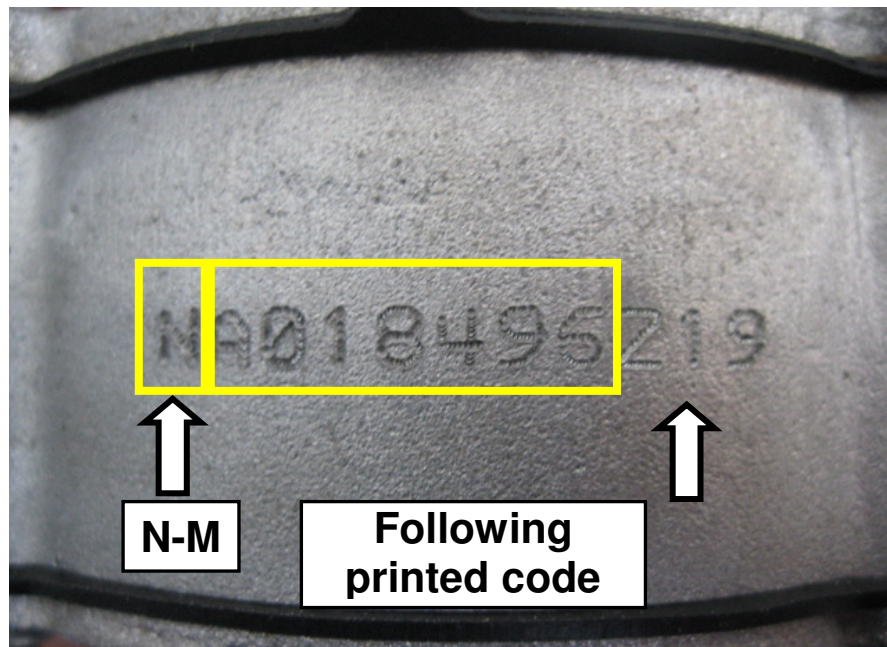


Check the code printed on the pressure regulator:

- If the first letter printed on the pressure regulator is:  
**O** or **X** or **Y** the vehicle **is compliant**.



- If the first letter printed on the pressure regulator is:  
**N** or **M** you need to check the code printed after N M:



- If the code printed after the letter **N** is higher or equal to **A023643** the vehicle **is compliant**.
- If the code printed after the letter **M** is higher or equal to **A025351** the vehicle **is compliant**.

If, after the checks, the printed code is different from the above, the vehicle **is not compliant** and the pressure regulator must be replaced operating as described in operation 1043B40 - 1043A02 of the Service Manual.

**Note:**

**The replaced material must be compulsorily returned for being analysed.  
Incorrect replacement or failed return of materials will be charged to the dealer.**

**Disposal of removed parts:**

**Removed part return required?: YES**

**ITALY:**

ON REQUEST OF THE D.R.S. THE REMOVED PARTS  
MUST BE RETURNED TO THE FOLLOWING ADDRESS:

**FIAT GROUP AUTOMOBILES S.p.A.  
- SERVIZIO RESI DA RETE  
- CORSO UNIONE SOVIETICA 460 - RICEVIMENTO  
MERCI MIRAFIORI – PORTA 14 - C.A.P. 10135 –  
TORINO**

***(If the parts are not returned, they shall be charged)***

**ABROAD:**

Local FGA technical service shall give all directions for  
the return of removed parts.

# CAMPAIGN

## Recall Campaign

5533



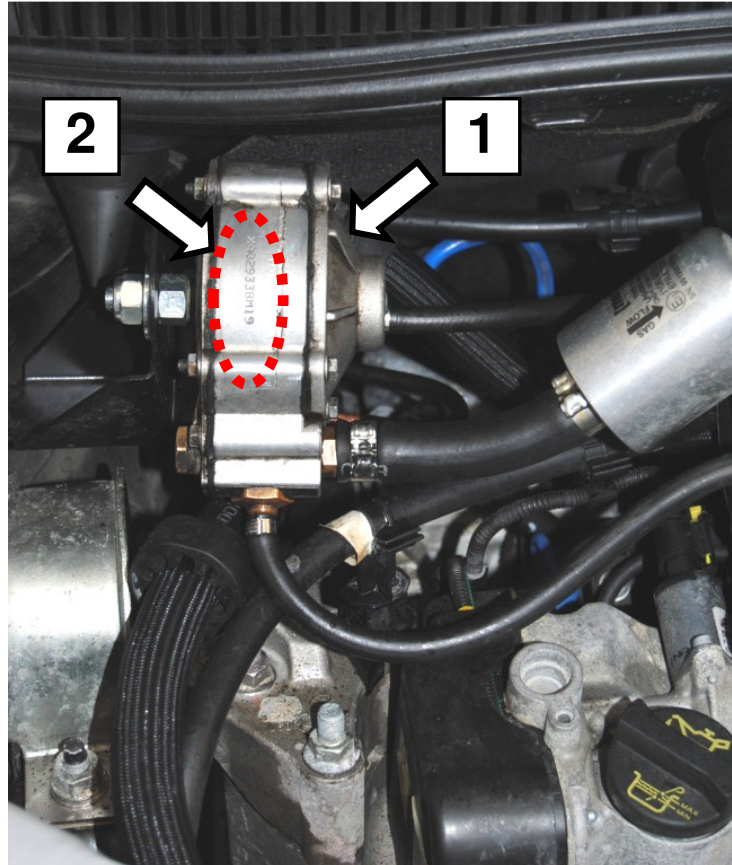
<b>COMPONENT:</b>	Pressure regulator for LPG fuel supply			
<b>PROBLEM:</b>	Non-compliance			
<b>VERSION:</b>	Fiat Punto Classic 1.2 8v			
<b>CONCERNED VEHICLES:</b>	all vehicles with chassis number listed in SIGI. (Chassis ranging between 1103487 and 1180725) vehicles assigned to you: consult your PC for the chassis numbers involved in the campaign.			
<b>TECHNICAL CAUSE:</b>	Production process			
<b>RELEASE NO.:</b>	0			
<b>MATERIAL:</b>	Description:	Part No.:	Q.ty:	
	Pressure regulator	71753461	01	
<b>SPECIAL TOOLS:</b>	-			
<b>EPLUS ORDER UPLOADING METHOD:</b>	-			
<b>REMUNERATION:</b>	Cost:	Campaign:	Operation:	Time:
<b>MANPOWER AND MATERIAL:</b>	A01	5533	A B	Check 0.20 Check+int. 1.20
<b>MISCELLANEOUS (MAIL, ETC.):</b>	A10	5533	-	-
<b>SOLUTION IN PRODUCTION:</b>	The fitting of complying parts is guaranteed.			
<b>NETWORK INTERVENTION IDENTIFICATION:</b>	A spot of white paint on the pressure regulator next to the printed code			

Therefore, it is compulsory to make a pre-delivery intervention on vehicles still in stock. For vehicles which have already been delivered, customers must be contacted by registered letter to upgrade all vehicles.

## OPERATING CYCLE

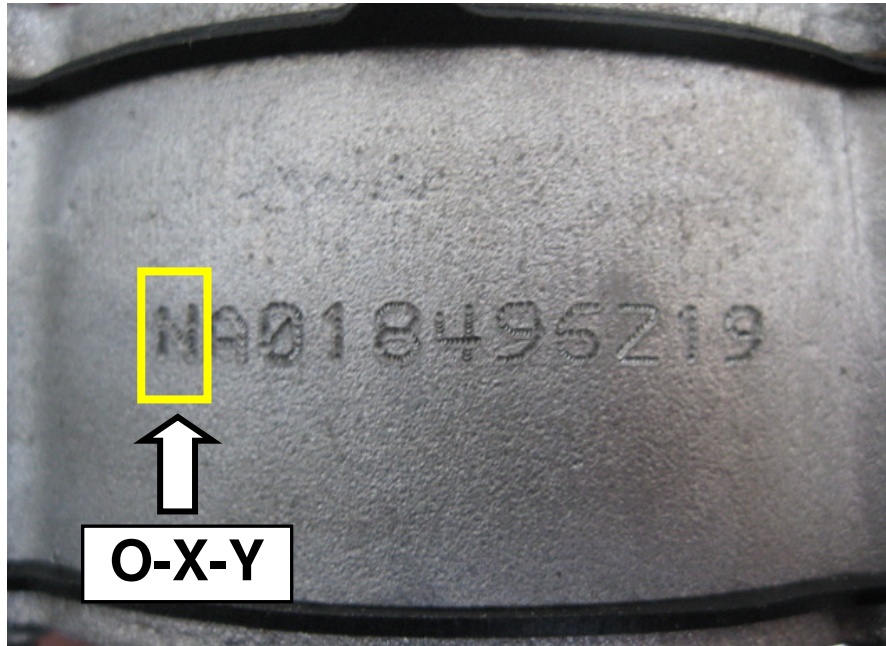
Working in the engine compartment, proceed as follows:

- Locate the pressure regulator (1) for LPG fuel supply
- Identify the printed code (2) on the pressure regulator

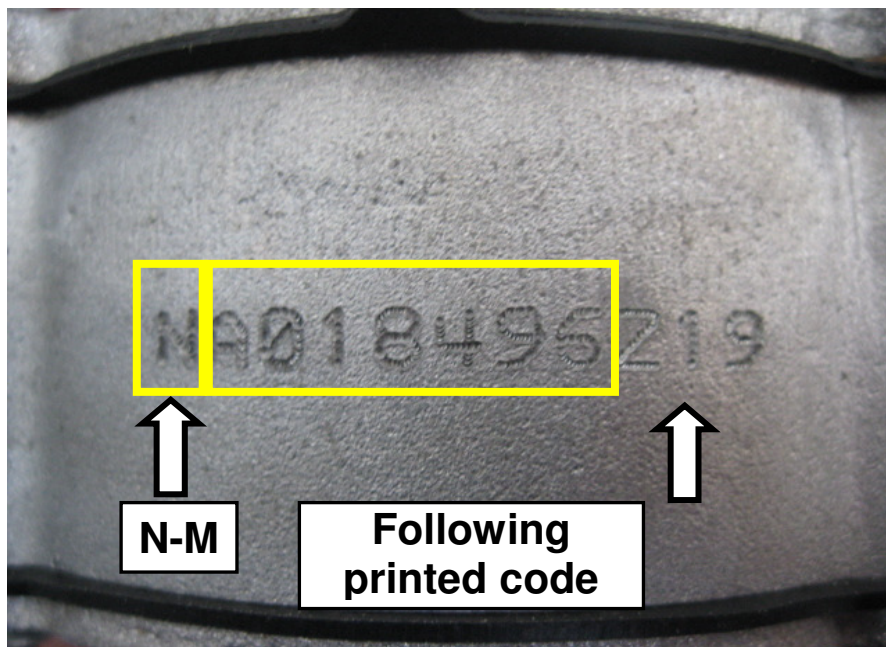


Check the code printed on the pressure regulator:

- If the first letter printed on the pressure regulator is:  
**O** or **X** or **Y** the vehicle **is compliant**.



- If the first letter printed on the pressure regulator is:  
**N** or **M** you need to check the code printed after N M:



- If the code printed after the letter **N** is higher or equal to **A023643** the vehicle **is compliant**.
- If the code printed after the letter **M** is higher or equal to **A025351** the vehicle **is compliant**.

If, after the checks, the printed code is different from the above, the vehicle **is not compliant** and the pressure regulator must be replaced operating as described in operation 1043B40 - 1043A02 of the Service Manual.

**Note:**

**The replaced material must be compulsorily returned for being analysed.  
Incorrect replacement or failed return of materials will be charged to the dealer.**

**Disposal of removed parts:**

**Removed part return required?: YES**

**ITALY:**

ON REQUEST OF THE D.R.S. THE REMOVED PARTS  
MUST BE RETURNED TO THE FOLLOWING ADDRESS:

**FIAT GROUP AUTOMOBILES S.p.A.  
- SERVIZIO RESI DA RETE  
- CORSO UNIONE SOVIETICA 460 - RICEVIMENTO  
MERCI MIRAFIORI – PORTA 14 - C.A.P. 10135 –  
TORINO**

***(If the parts are not returned, they shall be charged)***

**ABROAD:**

Local FGA technical service shall give all directions for  
the return of removed parts.

# CAMPAIGN

## Recall Campaign

5533



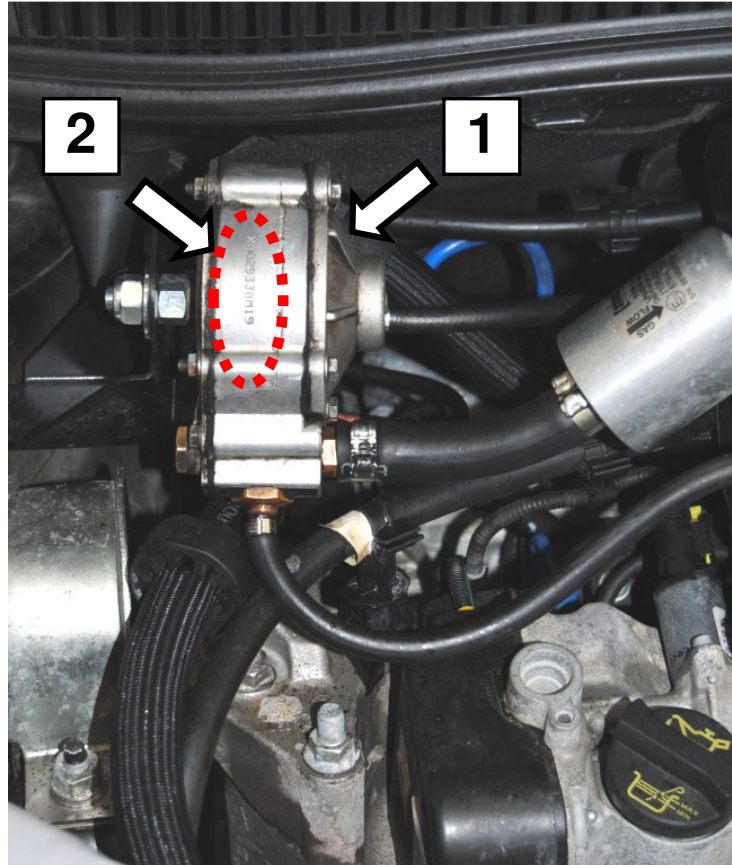
<b>COMPONENT:</b>	Pressure regulator for LPG fuel supply			
<b>PROBLEM:</b>	Non-compliance			
<b>VERSION:</b>	Fiat Bravo 1.4 16v			
<b>CONCERNED VEHICLES:</b>	all vehicles with chassis number listed in SIGI. (Chassis ranging between 4188172 and 4303989)			
	vehicles assigned to you: consult your PC for the chassis numbers involved in the campaign.			
<b>TECHNICAL CAUSE:</b>	Production process			
<b>RELEASE NO.:</b>	0			
<b>MATERIAL:</b>	Description:	Part No.:	Q.ty:	
	Pressure regulator	71753461	01	
<b>SPECIAL TOOLS:</b>	-			
<b>EPLUS ORDER UPLOADING METHOD:</b>	-			
<b>REMUNERATION:</b>	Cost:	Campaign:	Operation:	Time:
<b>MANPOWER AND MATERIAL:</b>	A01	5533	A B	Check 0.20 Check+int 1.25
<b>MISCELLANEOUS (MAIL, ETC.):</b>	A10	5533	-	-
<b>SOLUTION IN PRODUCTION:</b>	The fitting of complying parts is guaranteed.			
<b>NETWORK INTERVENTION IDENTIFICATION:</b>	A spot of white paint on the pressure regulator next to the printed code			

Therefore, it is compulsory to make a pre-delivery intervention on vehicles still in stock. For vehicles which have already been delivered, customers must be contacted by registered letter to upgrade all vehicles.

## OPERATING CYCLE

Working in the engine compartment, proceed as follows:

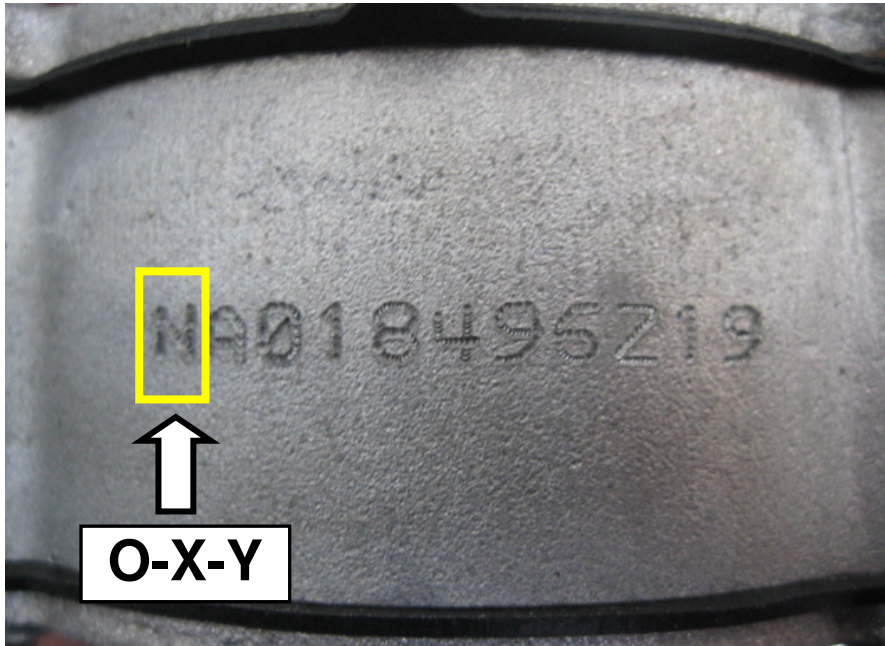
- Locate the pressure regulator (1) for LPG fuel supply
- Identify the printed code (2) on the pressure regulator



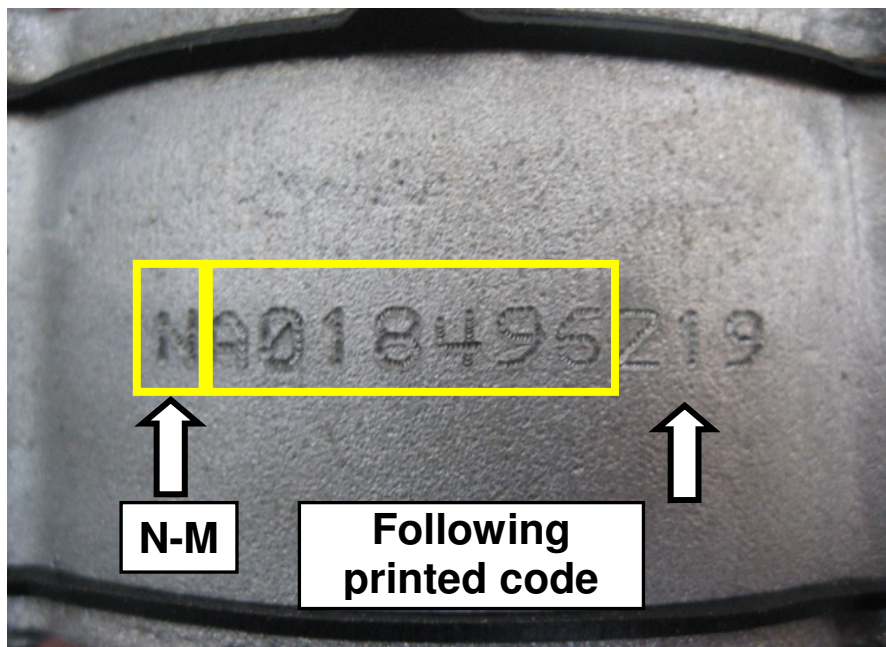


Check the code printed on the pressure regulator:

- If the first letter printed on the pressure regulator is:  
**O** or **X** or **Y** the vehicle **is compliant**.



- If the first letter printed on the pressure regulator is:  
**N** or **M** you need to check the code printed after N M:



- If the code printed after the letter **N** is higher or equal to **A023643** the vehicle **is compliant**.
- If the code printed after the letter **M** is higher or equal to **A025351** the vehicle **is compliant**.

If, after the checks, the printed code is different from the above, the vehicle **is not compliant** and the pressure regulator must be replaced operating as described in operation 1043B40 - 1043A02 of the Service Manual.

**Note:**

**The replaced material must be compulsorily returned for being analysed.  
Incorrect replacement or failed return of materials will be charged to the dealer.**

**Disposal of removed parts:**

**Removed part return required?: YES**

**ITALY:**

ON REQUEST OF THE D.R.S. THE REMOVED PARTS  
MUST BE RETURNED TO THE FOLLOWING ADDRESS:

FIAT GROUP AUTOMOBILES S.p.A.  
- SERVIZIO RESI DA RETE  
- CORSO UNIONE SOVIETICA 460 - RICEVIMENTO  
MERCI MIRAFIORI – PORTA 14 - C.A.P. 10135 –  
TORINO

*(If the parts are not returned, they shall be charged)*

**ABROAD:**

Local FGA technical service shall give all directions for  
the return of removed parts.

# CAMPAIGN

## Recall Campaign

5533



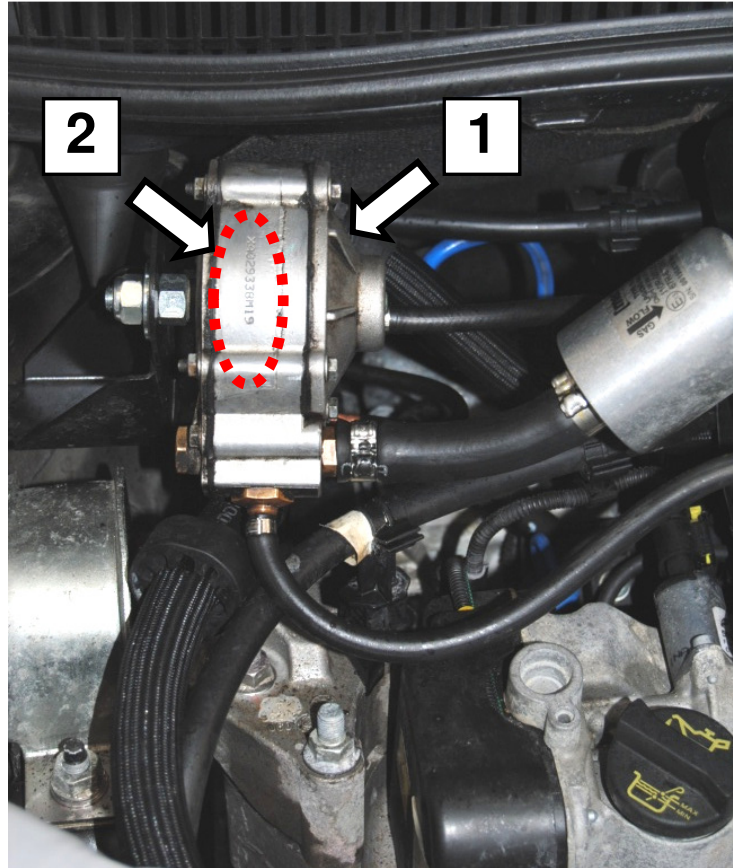
<b>COMPONENT:</b>	Pressure regulator for LPG fuel supply			
<b>PROBLEM:</b>	Non-compliance			
<b>VERSION:</b>	Fiat Idea 1.4 8v			
<b>CONCERNED VEHICLES:</b>	all vehicles with chassis number listed in SIGI. (Chassis ranging between 191361 and 201521)			
	vehicles assigned to you: consult your PC for the chassis numbers involved in the campaign.			
<b>TECHNICAL CAUSE:</b>	Production process			
<b>RELEASE NO.:</b>	0			
<b>MATERIAL:</b>	Description:	Part No.:	Q.ty:	
	Pressure regulator	71753461	01	
<b>SPECIAL TOOLS:</b>	-			
<b>EPLUS ORDER UPLOADING METHOD:</b>	-			
<b>REMUNERATION:</b>	Cost:	Campaign:	Operation:	Time:
<b>MANPOWER AND MATERIAL:</b>	A01	5533	A B	Check 0.20 Check+inter 1.20
<b>MISCELLANEOUS (MAIL, ETC.):</b>	A10	5533	-	-
<b>SOLUTION IN PRODUCTION:</b>	The fitting of complying parts is guaranteed.			
<b>NETWORK INTERVENTION IDENTIFICATION:</b>	A spot of white paint on the pressure regulator next to the printed code			

Therefore, it is compulsory to make a pre-delivery intervention on vehicles still in stock. For vehicles which have already been delivered, customers must be contacted by registered letter to upgrade all vehicles.

## OPERATING CYCLE

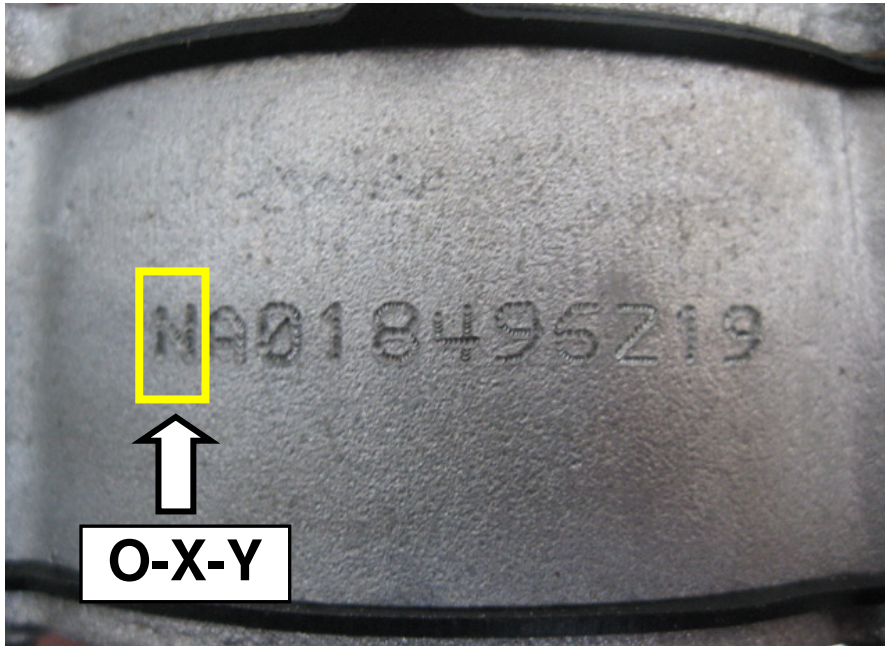
Working in the engine compartment, proceed as follows:

- Locate the pressure regulator (1) for LPG fuel supply
- Identify the printed code (2) on the pressure regulator

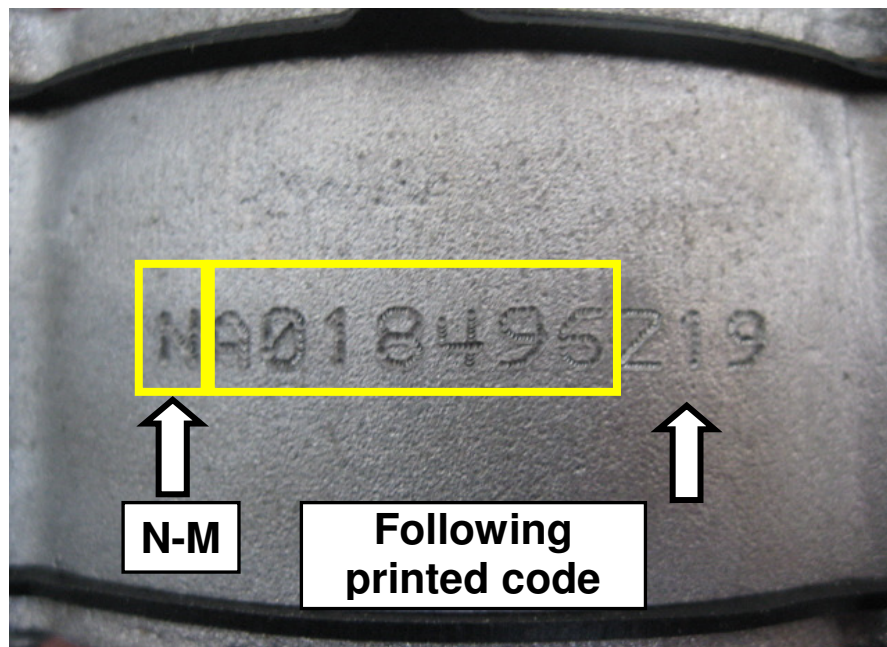


Check the code printed on the pressure regulator:

- If the first letter printed on the pressure regulator is:  
**O** or **X** or **Y** the vehicle **is compliant**.



- If the first letter printed on the pressure regulator is:  
**N** or **M** you need to check the code printed after N M:



- If the code printed after the letter **N** is higher or equal to **A023643** the vehicle **is compliant**.
- If the code printed after the letter **M** is higher or equal to **A025351** the vehicle **is compliant**.

If, after the checks, the printed code is different from the above, the vehicle **is not compliant** and the pressure regulator must be replaced operating as described in operation 1043B40 - 1043A02 of the Service Manual.

**Note:**

**The replaced material must be compulsorily returned for being analysed.  
Incorrect replacement or failed return of materials will be charged to the dealer.**

**Disposal of removed parts:**

**Removed part return required?: YES**

**ITALY:**

**ABROAD:**

ON REQUEST OF THE D.R.S. THE REMOVED PARTS  
MUST BE RETURNED TO THE FOLLOWING ADDRESS:

Local FGA technical service shall give all directions for  
the return of removed parts.

**FIAT GROUP AUTOMOBILES S.p.A.  
- SERVIZIO RESI DA RETE  
- CORSO UNIONE SOVIETICA 460 - RICEVIMENTO  
MERCI MIRAFIORI – PORTA 14 - C.A.P. 10135 –  
TORINO**

***(If the parts are not returned, they shall be charged)***

# CAMPAIGN

## Recall Campaign

5533

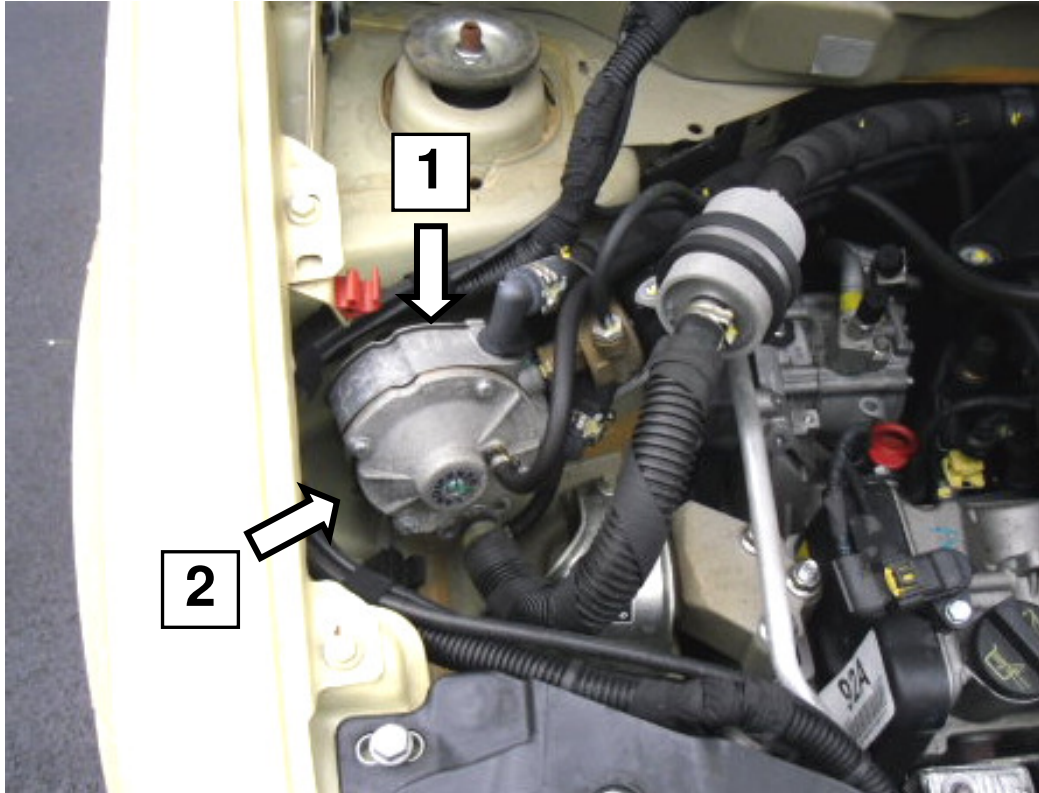


<b>COMPONENT:</b>	Pressure regulator for LPG fuel supply			
<b>PROBLEM:</b>	Non-compliance			
<b>VERSION:</b>	Fiat Panda 1.2 8v			
<b>CONCERNED VEHICLES:</b>	all vehicles with chassis number listed in SIGI. (Chassis ranging from 1312322 and 1450793)  vehicles assigned to you: consult your PC for the chassis numbers involved in the campaign.			
<b>TECHNICAL CAUSE:</b>	Production process			
<b>RELEASE NO.:</b>	0			
<b>MATERIAL:</b>	Description:	Part No.:	Q.ty:	
	Pressure regulator	71753461	01	
<b>SPECIAL TOOLS:</b>	-			
<b>EPLUS ORDER UPLOADING METHOD:</b>	-			
<b>REMUNERATION:</b>	Cost:	Campaign:	Operation:	Time:
<b>MANPOWER AND MATERIAL:</b>	A01	5533	A B	Check 0.20 Check+inter 1.25
<b>MISCELLANEOUS (MAIL, ETC.):</b>	A10	5533	-	-
<b>SOLUTION IN PRODUCTION:</b>	The fitting of complying parts is guaranteed.			
<b>NETWORK INTERVENTION IDENTIFICATION:</b>	A spot of white paint on the pressure regulator next to the printed code  Therefore, it is compulsory to make a pre-delivery intervention on vehicles still in stock. For vehicles which have already been delivered, customers must be contacted by registered letter to upgrade all vehicles.			

## OPERATING CYCLE

Working in the engine compartment, proceed as follows:

- Locate the pressure regulator (1) for LPG fuel supply
- Identify the printed code (2) on the pressure regulator

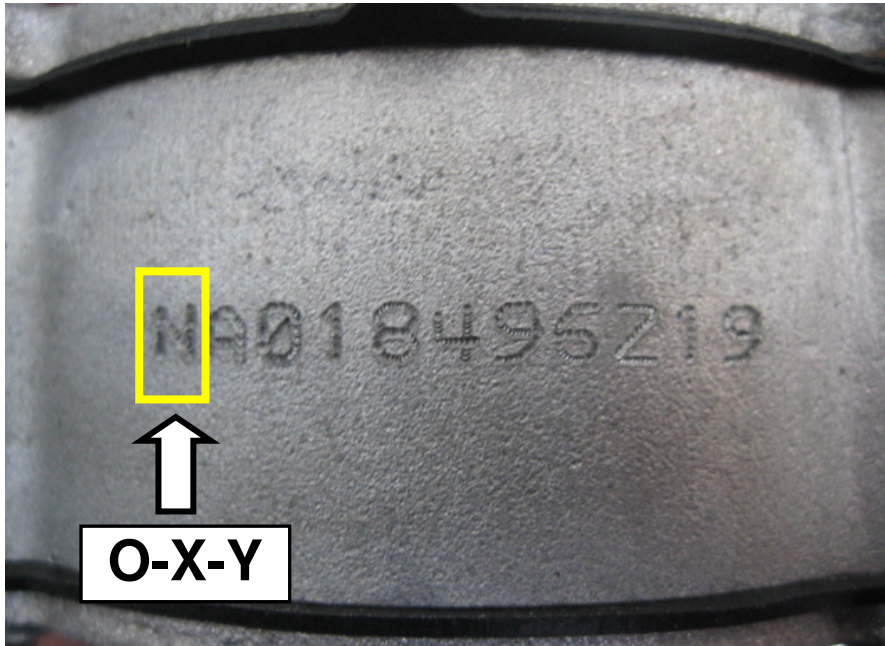


- Get a small mirror to identify the code printed on the pressure regulator (1)

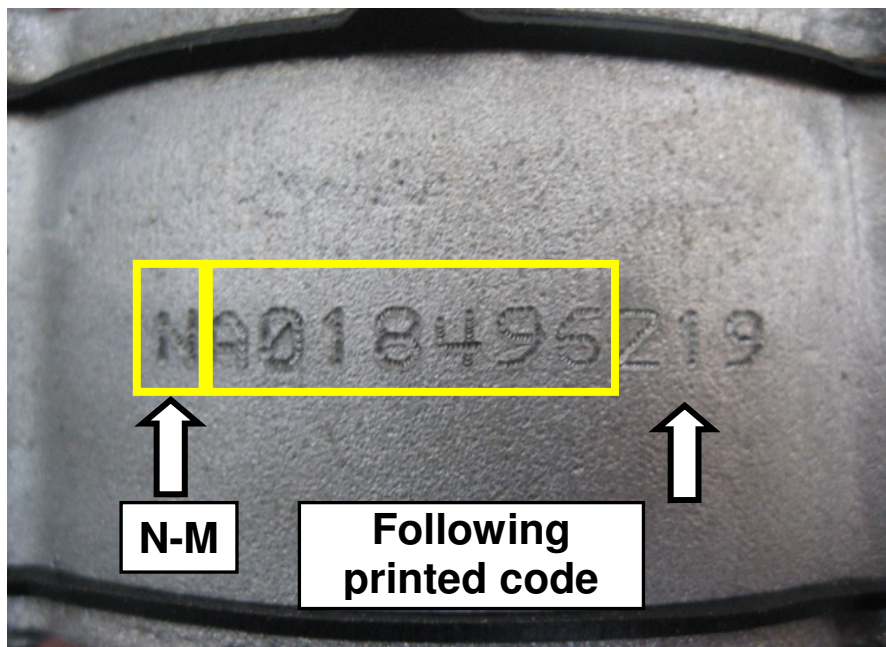


Check the code printed on the pressure regulator:

- If the first letter printed on the pressure regulator is:  
**O** or **X** or **Y** the vehicle **is compliant**.



- If the first letter printed on the pressure regulator is:  
**N** or **M** you need to check the code printed after N M:



- If the code printed after the letter **N** is higher or equal to **A023643** the vehicle **is compliant**.
- If the code printed after the letter **M** is higher or equal to **A025351** the vehicle **is compliant**.

If, after the checks, the printed code is different from the above, the vehicle **is not compliant** and the pressure regulator must be replaced operating as described in operation 1043B40 - 1043A02 of the Service Manual.

**Note:**

**The replaced material must be compulsorily returned for being analysed.  
Incorrect replacement or failed return of materials will be charged to the dealer.**

**Disposal of removed parts:**

**Removed part return required?: YES**

**ITALY:**

**ABROAD:**

ON REQUEST OF THE D.R.S. THE REMOVED PARTS  
MUST BE RETURNED TO THE FOLLOWING ADDRESS:

Local FGA technical service shall give all directions for  
the return of removed parts.

**FIAT GROUP AUTOMOBILES S.p.A.  
- SERVIZIO RESI DA RETE  
- CORSO UNIONE SOVIETICA 460 - RICEVIMENTO  
MERCI MIRAFIORI – PORTA 14 - C.A.P. 10135 –  
TORINO**

***(If the parts are not returned, they shall be charged)***